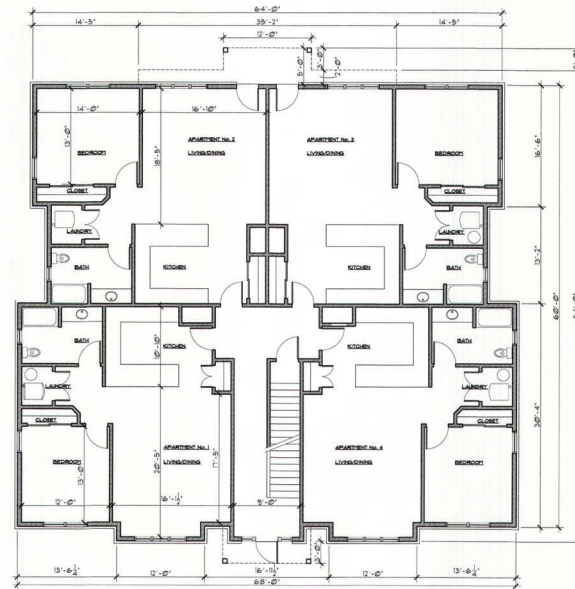


BASEMENT FLOOR
SCALE: 1/8" = 1'-0"

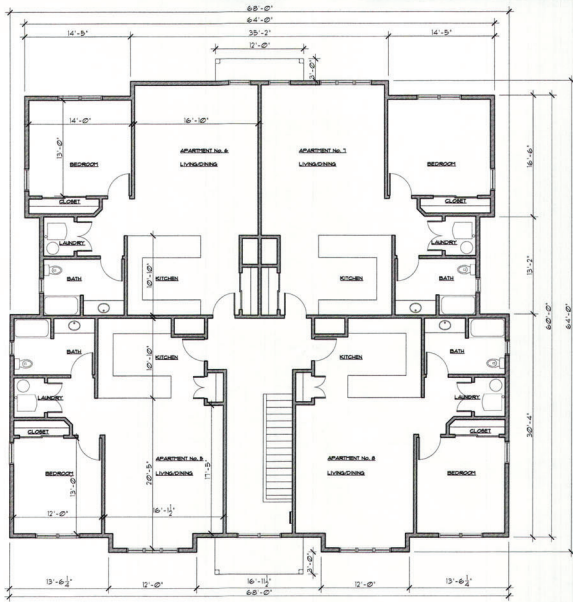
NEW RESIDENTIAL APARTMENTS

257 POMPTON AVENUE,
VERONA, NEW JERSEY

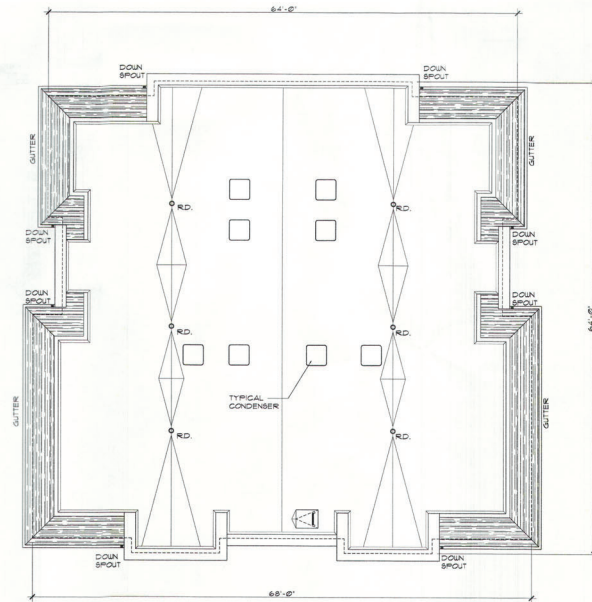
PROPOSED TO INCLUDE:
FOUR 1-BEDROOM APARTMENTS ON
THE FIRST AND SECOND FLOORS,
FOR A TOTAL OF
EIGHT 1-BEDROOM APARTMENTS



FIRST FLOOR
SCALE: 1/8" = 1'-0"



SECOND FLOOR
SCALE: 1/8" = 1'-0"



ROOF PLAN
SCALE: 1/8" = 1'-0"

DO NOT SCALE DRAWINGS. ACTUAL FIELD
CONDITIONS SHALL BE MEASURED AND
VERIFIED PRIOR TO PERFORMING ANY WORK.



KURT H. SCHMITT ARCHITECT
7 SHAWNEE TRAIL, DENVER, NJ 07834
TELEPHONE: 862-432-8895
EMAIL: kurt@khschmitt.com
NJ LIC. No. A-109190

NEW APARTMENT BUILDING
257 POMPTON AVENUE
VERONA, NEW JERSEY

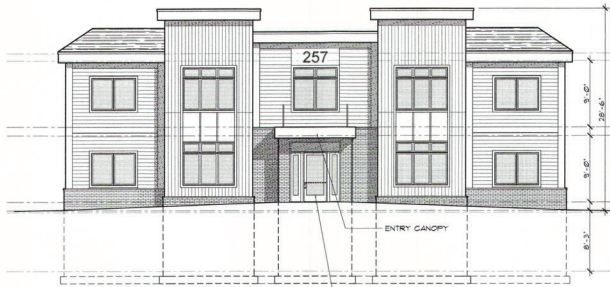
REVISIONS:

DATE: 10/20/23
DRAWN BY: K-H
CHECKED BY: J-S
PROJECT NUMBER: 26356

COPYRIGHT 2024
KURT H. SCHMITT ARCHITECT
ALL RIGHTS RESERVED. THE CONTENTS OF THIS DOCUMENT OR ANY PART THEREOF ARE THE PROPERTY OF KURT H. SCHMITT ARCHITECT AND ARE NOT TO BE REPRODUCED OR TRANSMITTED IN ANY FORM OR BY ANY MEANS, ELECTRONIC OR MECHANICAL, INCLUDING PHOTOCOPYING, RECORDING, OR BY ANY INFORMATION STORAGE AND RETRIEVAL SYSTEM, WITHOUT THE WRITTEN PERMISSION OF KURT H. SCHMITT ARCHITECT. A STRUCTURE PROJECT IS.

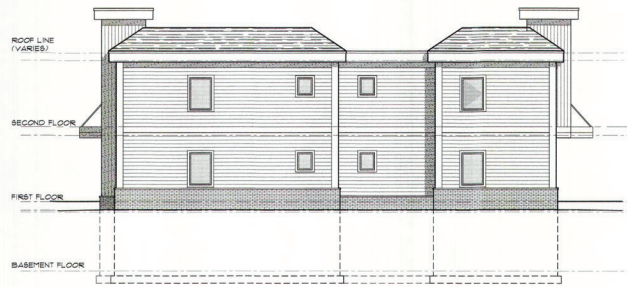
SHEET: 1 OF 2

A-1



WEST ELEVATION (RAMPTON AVENUE)
SCALE: 1/8" = 1'-0"

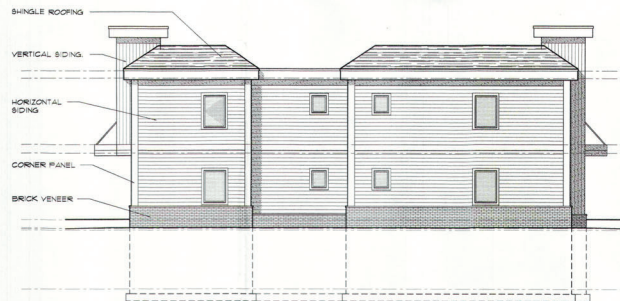
BUILDING
ENTRANCE



SOUTH ELEVATION (VINCENT PLACE)
SCALE: 1/8" = 1'-0"



EAST ELEVATION (REAR)
SCALE: 1/8" = 1'-0"



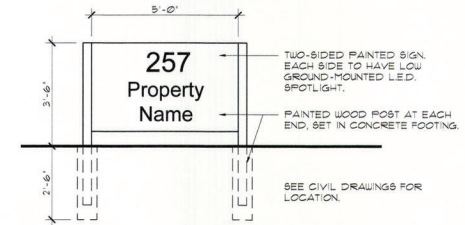
NORTH ELEVATION
SCALE: 1/8" = 1'-0"

4'-6"
2'-0"
257

INDIVIDUAL WALL MOUNTED NUMBERS WITH BACK-LIGHTING. NUMBERS TO NOT EXTEND MORE THAN 18 INCHES OFF THE FINISH WALL SURFACE.

WALL FRONTAGE FOR PROPOSED SIGN IS 4'-6". SIGN AREA IS 9 SQUARE FEET. MAXIMUM PERMITTED SIZED IS 1 SQUARE FOOT FOR EACH LINEAL FEET OF FRONTAGE OR 6.9 SQUARE FEET IS PERMITTED. PROPOSED SIGN COMPLIES.

WALL MOUNTED SIGN
NOT TO SCALE



GROUND MOUNTED MONUMENT SIGN
NOT TO SCALE

DO NOT SCALE DRAWINGS. ACTUAL FIELD CONDITIONS SHALL BE MEASURED AND VERIFIED PRIOR TO PERFORMING ANY WORK.

RECEIVED
APR 21 2023

KURT H. SCHMITT ARCHITECT
7 SHAWNEE TRAIL, DENVER, NJ 07834
PHONE: 952-62-8888
FAX: 952-62-8888
NJ LIC. No. A-09190

NEW APARTMENT BUILDING
251 RAMPTON AVENUE
VERONA, NEW JERSEY

REVISIONS:

DATE: 3-14-23
DRAWN BY: JCS
CHECKED BY: JCS
PROJECT NUMBER: 26356

COPYRIGHT 2023
KURT H. SCHMITT ARCHITECT
ALL RIGHTS RESERVED. THE CONTENTS OF THESE DRAWINGS ARE THE PROPERTY OF THE ARCHITECT AND SHALL REMAIN THE PROPERTY OF THE ARCHITECT. NO PART OF THESE DRAWINGS MAY BE REPRODUCED OR TRANSMITTED IN ANY FORM OR BY ANY MEANS, ELECTRONIC OR MECHANICAL, WITHOUT THE WRITTEN PERMISSION OF THE ARCHITECT. ARCHITECT IS STRICTLY PROHIBITED.

SHEET: 2 OF 2
A-2